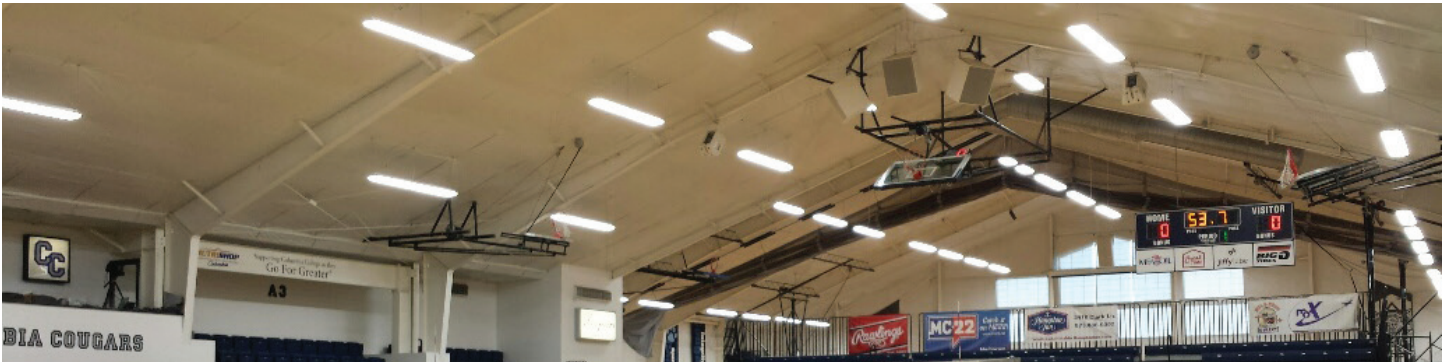


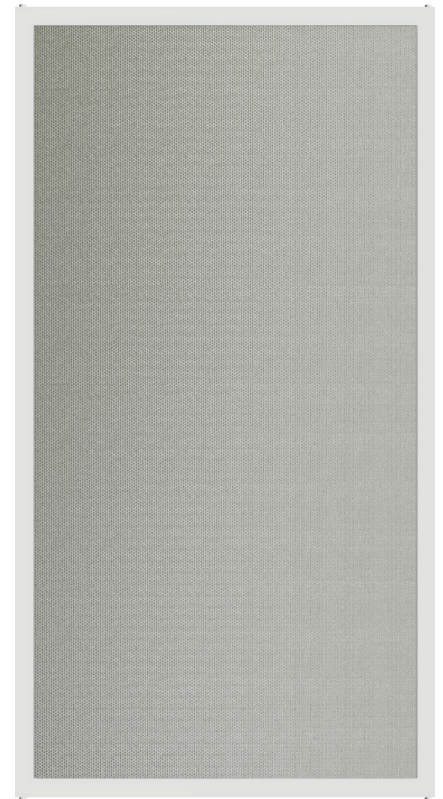
Case Study: **Columbia College**



Southwell Gym on the campus of Columbia College in Columbia, Missouri is a multipurpose athletic complex that features basketball games, volleyball matches, intramural sports and special events such as graduation. With so many different events taking place, proper lighting is of the utmost importance.

So when Columbia College looked to increase light quality, improve lighting control and save money while reducing energy usage, it turned to EiKO's LitespanLED® Linear Highbay fixtures.

Southwell Gym's existing lighting installations consisted of T5 fluorescent fixtures and metal halide, causing numerous problems. The color variation between the two types of light made it difficult to film events. A lack of dimmability caused glare and bright spots during sporting events such as volleyball. And, of course, operating fluorescent and metal halide lamps can be quite costly.



LLH:
LED Linear Highbay Fixture

Left: The gym before retrofitting.



Case Study: **Columbia College**

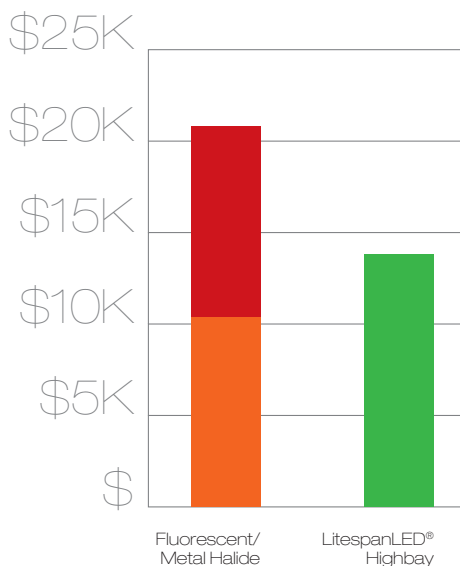


Above: The gym after retrofitting.

Upon the switch to LitespanLED® Highbay Fixtures, Columbia College immediately found solutions to these problems. Dimmability allows for softer light during volleyball games where players are always looking toward the ceiling. Dimming over the crowd during basketball games keeps the action focused on the game and reduces distractions for players. A consistent level of light across the entire facility improves the quality of video taken at important events like graduation. LED fixtures start immediately, alleviating the 20-minute warmup time required of metal halide. And, perhaps most importantly, LED fixtures now qualify for Columbia, Missouri's energy rebate programs.

All in all, Columbia College was able to improve light quality and save money with LitespanLED® Fixtures from EiKO.

annual lighting cost comparison:



Fixtures Replaced:	Wattage	Hrs/Year	kWh/Year
56 Fluorescent	324W/fixture	5,824	105,671
16 Metal Halide	1,080W/fixture	5,824	100,639
Total:			206,310

Replaced With:	Wattage	Hrs/Year	kWh/Year
112 LitespanLED® Highbay	220W/fixture	5,824	143,503
Reduced by:			62,807

Estimated Annual Savings:..... **\$6,280.60**

Payback Years:..... **7.96**

watch > like > follow

