

Does your fan have the right box above it?

Nearly 20,000 people are injured annually in the U.S. due to improperly installed ceiling fans.

Carlon®



The National Electrical Code (NEC) has changed to protect people from this happening. The new UL listed Carlon® Blue™ fan-rated ceiling box meets the updated standard. Now there's a better way to help make homes safer with a ceiling fan box rated for support of light fixtures up to 50 lb. and ceiling fans up to 35 lb.

- 01 B520A-CFB
- 02 B620KR-CFB

Learn more about the full line of Carlon® non-metallic boxes and accessories



For confidence and safety, choose new Carlon Blue fan-rated ceiling boxes for new work. These 4" diameter round non-metallic boxes are available with your choice of either an L-bracket for secure fan mounting or a 14 $\frac{3}{8}$ " to 22 $\frac{1}{2}$ " adjustable bar hanger to position the box between ceiling joists — and either with or without a grounding screw.

They conform to UL 514C and meet NEC 314.27 (C) requirements for use in both habitable and non-habitable rooms.



Meets the latest industry requirements for ceiling fan support



Rated for 50 lb. light fixture and 35 lb. ceiling fan



Vibration-proof screws through reinforced metal brackets for greater strength than plastic alone



Takes the guesswork out of selecting a fan-rated box

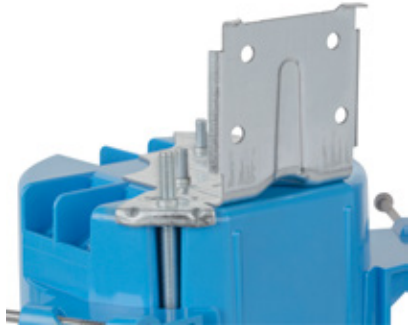


Offers confidence, peace of mind and safety

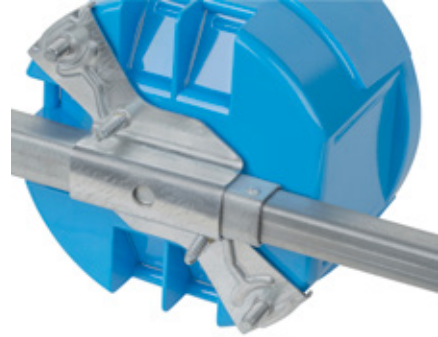


Carlton® Blue™ fan-rated ceiling boxes

Helping keep homes safer.



01



02

01 B520 models feature vibration-proof screws through reinforced metal brackets for greater strength than plastic alone.

02 Back side view of B620 models with hanger bar that adjusts from 14 $\frac{3}{8}$ " to 22 $\frac{1}{2}$ " to position the box between ceiling joists. This box is rated for 50 lb fixture and 35 lb fan support up to the full 22 $\frac{1}{2}$ " span.

03 B520A-CFB

04 B620KR-CFB

05 B620KGR-CFB

Features

- 2 $\frac{3}{4}$ " and 3 $\frac{1}{2}$ " spaced light fixture/device mounting holes
- Ceiling fan support with 3 $\frac{1}{2}$ " spaced mounting holes, screws supplied
- Steel bracket has tapped holes for secure fan mounting
- Includes #10-32 screws for fan support (must be used for ceiling fan installation)
- Built-in cable clamps hold wires securely in box
- Fan load rating clearly visible inside box
- Box volume: 20 cu. in.

Maximum number of wires in box:

- (10) #14 AWG
- (8) #12 AWG or #10 AWG

Ratings

- Fire rating: 2 hours
- Fan support: 35 lb. or less
- Fixture support: 50 lb. or less

Materials

- Box: Polycarbonate
- Bar hanger: Steel
- Fan support bracket: Steel



03



04



05

Carlton Blue fan-rated ceiling boxes for new work



Catalog no.	Description	Std. pkg. qty.
B520A-CFB	Ceiling box with L-bracket	50
B520P-CFB	Ceiling box with L-bracket and ground screw	50
B620KR-CFB	Ceiling box with 14 $\frac{3}{8}$ "–22 $\frac{1}{2}$ " adjustable bar hanger	30
B620KGR-CFB	Ceiling box with 14 $\frac{3}{8}$ "–22 $\frac{1}{2}$ " adjustable bar hanger and ground screw	30

ABB Installation Products Inc.
Electrification Business
860 Ridge Lake Blvd.
Memphis, TN 38120

electrification.us.abb.com

ABB has made every attempt to ensure the accuracy and reliability of the contents of this document. However, all content is provided for general informational purposes only, and ABB makes no guaranty or warranty, express or implied, as to the accuracy of any technical content, or that the information contained in this publication will be error free and all such guarantees or warranties are expressly

disclaimed. ABB may change or modify the contents at any time, without prior notice. We reserve all rights in this document and in the subject matter and illustrations contained therein. Any reproduction or utilization of its contents — in whole or in parts — is forbidden without prior written consent of ABB.
© 2024 ABB Installation Products Inc. and/or its related companies All rights reserved